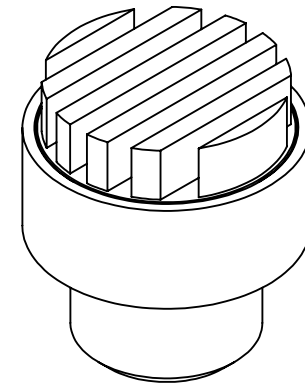
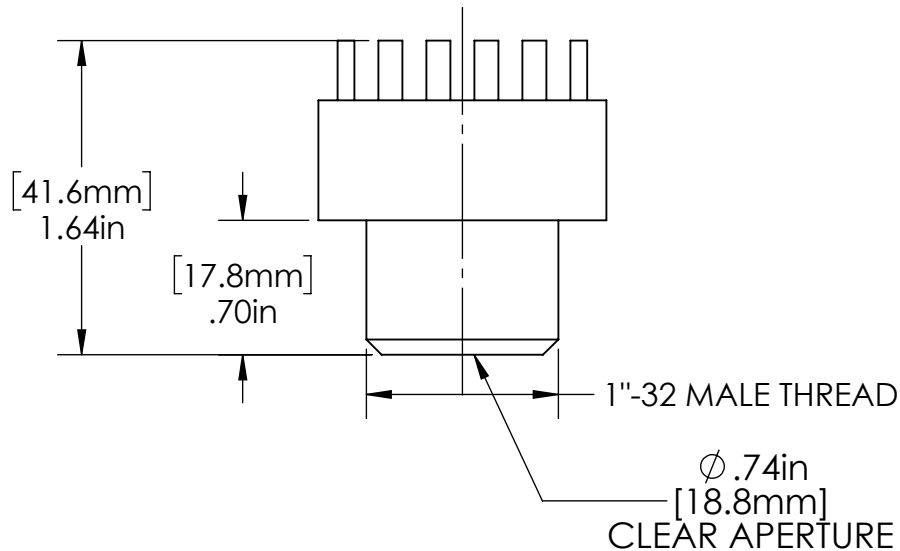
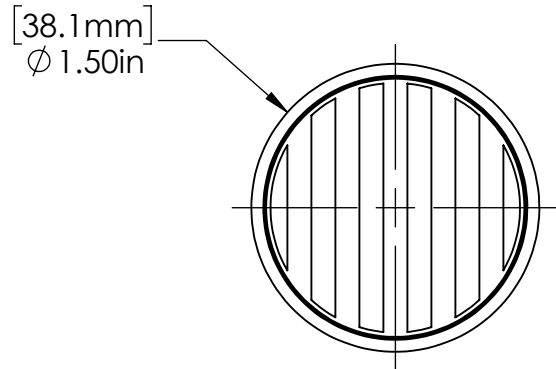



AIR-COOLED PART NUMBER EXAMPLES:

BD2-19-B-A: Laser Beam Dump, 19mm Series, Coated Brass Cone, Air-Cooled for 1032nm to 10.6µm

BD2-19-C-A: Laser Beam Dump, 19mm Series, Copper Cone, Air-Cooled for 355nm to 532nm

BD2-19-W-A: Laser Beam Dump, 19mm Series, Coated Copper Wedge Deflector, Air-Cooled for 1032nm to 10.6µm



FOR INFORMATION ONLY NOT FOR MANUFACTURING	DATE: 05/03/23	DRAWN BY: DVH	CHK'D BY: GJH	TOLERANCES: (EXCEPT AS NOTED)	REV.	DESCRIPTION	DATE	APPD	 37 IRONIA ROAD FLANDERS NJ 07836 (973) 598-1150 Fax: 598-1151	
HAAS DOC.# BD2-19-A-SALES				X.XXX= ± 0.005 X.XX= ± 0.01 X/X = ± 1/64 ANGULAR: ± 0.5°						
SPECIFICATIONS SUBJECT TO CHANGE WITHOUT NOTICE. CONTACT HAAS LTI FOR MORE INFORMATION									BD2-19 AIR-COOLED BEAM DUMP	BOM#
										SCALE: 1:1